



muhimbi

QUICKSTART GUIDE

PDF Editor

for SharePoint On-Premises

v1.4

Solution architecture

The Muhimbi PDF Editor for SharePoint is a highly optimized solution that focuses on minimal installation and administration efforts.

Users can view and edit documents within the context of SharePoint without leaving the browser. The solution package (a WSP file) automatically takes the settings defined in the document libraries (e.g. check-out behavior, permissions, etc.) into account.

Prerequisites

Software requirements

Our product is officially supported on the following platforms:



Windows Server

Windows Server 2008 R2, Windows Server 2012, Windows Server 2016, Windows Server 2019, Windows Server 2022



SharePoint versions

SharePoint 2013, 2016, 2019 and SE

Client support requirement



Browser

A modern browser (Chrome, Edge, Firefox).

Hardware requirements

Our product works well on any server powerful enough to run SharePoint.



Memory

No specific requirements.



CPU

Any CPU that can comfortably run the installed version of SharePoint is suitable.



Disk space

This product requires 44MB of disk space.

Deployment

Before starting the deployment process, please make sure you have access to the following:

01

A user account with the appropriate privileges to deploy both Windows software and SharePoint WSP files. (It's worth considering using your SharePoint web application pool account, as it'll most likely meet all the requirements.)

02

Before attempting to deploy your solution package, ensure your account is a farm administrator and your account has *db_owner* rights for the admin content database. This is a common requirement for deploying SharePoint solutions and isn't specific to Muhimbi's products.

03

For deploying to production environments, you need a license for the Muhimbi PDF Editor for SharePoint. A license isn't needed to deploy the evaluation version.

Introduction and high-level architecture

Our product consists of two parts bundled into a single SharePoint solution (WSP):

SharePoint Front End

SharePoint features provide a thin layer to the SharePoint Web Front End, including facilities for the context menu, ribbon buttons and license manager.

WebAssembly

"WebAssembly is a type of code that can be run in modern web browsers — it is a low-level assembly-like language with a compact binary format that runs with near-native performance."

— <https://developer.mozilla.org/en-US/docs/WebAssembly>

It's also designed to run alongside the SharePoint user interface.

Installation steps

Our software is deployed as a standard SharePoint solution (WSP) file. The installation steps are outlined below.

01

Use the elevated Command Prompt or PowerShell to run the appropriate installation script bundled with the SharePoint solution (WSP):

- For **SharePoint 2013** or **SharePoint 2016**, execute the **install.SP2013-2016.cmd** script.
 - For **SharePoint 2019**, execute the **install.SP2019.cmd** script.
 - For **SharePoint Subscription Edition**, execute the **Install.SPSE.ps1** PowerShell script.
-

02

Check that the installation has been successful by navigating to *Central Administration > System Settings > Manage Farm solutions*.

Post-installation steps

Once the main installation process is complete, the software can be used to view or edit PDF files using the SharePoint user interface, as the feature is self activating.

Installing the license

Navigate to *Central Administration > System Settings* and click the link for the Muhimbi PDF Editor for SharePoint license manager. Copy the license text and paste it into the license manager's License field. Click Save to activate the license.

Please note: When a PDF file is edited and saved without a license, a permanent evaluation watermark will be added to the file.

SharePoint feature activation/deactivation

The SharePoint features in the solution file are self activating, and some of them are enabled by default.

Farm feature

The Muhimbi PDF Editor for SharePoint farm feature enables the Muhimbi PDF Editor for SharePoint license manager screen in SharePoint Central Administration (enabled by default).

Web application feature

The Muhimbi PDF Editor for SharePoint web application feature activates the PDF editor functionality on all site collections in a web application (enabled by default).

Site collections feature

The Muhimbi PDF Editor for SharePoint site collection feature activates the PDF editor functionality on the site collection. This feature isn't enabled by default and is only needed if the web application feature is disabled.

If you want to use the Muhimbi PDF Editor for SharePoint only on specific site collections, please deactivate the feature on the web application level and enable it on the specific site collections only.

Uninstallation via command line

The Muhimbi PDF Editor for SharePoint can be uninstalled by running the appropriate uninstallation script in an elevated Command Prompt or PowerShell:

- For **SharePoint 2013** or **SharePoint 2016**, execute the **uninstall.SP2013-2016.cmd** script.
- For **SharePoint 2019**, execute the **uninstall.SP2019.cmd** script.
- For **SharePoint Subscription Edition**, execute the **Uninstall.SPSE.ps1** PowerShell script.

Uninstallation via Central Administration

To uninstall the solution using the Central Administration web-based interface, please follow the steps outlined below.

01

Open Central Administration and navigate to *System Settings > Manage Farm solutions*.

02

Select the solution to retract:

- For **SharePoint 2013** or **SharePoint 2016**, select **muhimbi.pdfeditor.sp2013-2016.wsp**.
- For **SharePoint 2019** or **SharePoint Subscription Edition**, select **muhimbi.pdfeditor.sp2019-se.wsp**.

03

Click the Retract Solution button.

04

Accept the default settings and click OK.

05

Depending on the size of the web farm, this may take a few minutes. Refresh the Solution Management page until the status is set to Not Deployed.

06

Click the solution name again.

07

Click the Remove Solution button to remove it from the farm completely.

Troubleshooting and other common tasks

Unless certain logging levels have been disabled in *Central Administration > Monitoring > Configure Diagnostic Logging*, all errors are written to the SharePoint trace log.

Errors are also written to the Windows Application Event log using Event ID 41735.

‘Something Went Wrong’ or ‘resource object not found’

If you receive a ‘**Something Went Wrong**’ message or the equivalent in your local language, there may have been a problem with the distribution of your language-specific resource files. This error isn’t logged to the event log, as this is a SharePoint error that was triggered before our software started.

To get more information about the error, temporarily change the `CallStack` attribute in the `SafeMode` element in the **web.config** to `True`. If a message similar to the following is displayed after refreshing the page, you need to force SharePoint to redistribute the resource files.

Server Error in '/' Application.

Could not find any resources appropriate for the specified culture or the neutral culture. Make sure "Resources.MuhimbiPDFEditor.resources" was correctly embedded or linked into assembly

This can be done by issuing the following command on each server exhibiting the problem:

```
stsadm -o copyappbincontent
```

Note: STSADM is located at %CommonProgramFiles%\Microsoft Shared\Web Server Extensions\15\BIN (for SP2013, SP2016 and SP2019).

For SharePoint Subscription Edition, please use the PowerShell command below:

```
Install-SPApplicationContent
```


PDF viewer stuck on loading

In some rare cases, SharePoint might prevent changes to the **web.config** file.

If the `application/wasm` MIME type isn't added to the staticContent node (under system.webServer) in the web.config file, then the WebAssembly file cannot be served by the web server.

Please verify in IIS Manager that the WASM extension is added to the list of MIME types for the SharePoint site.

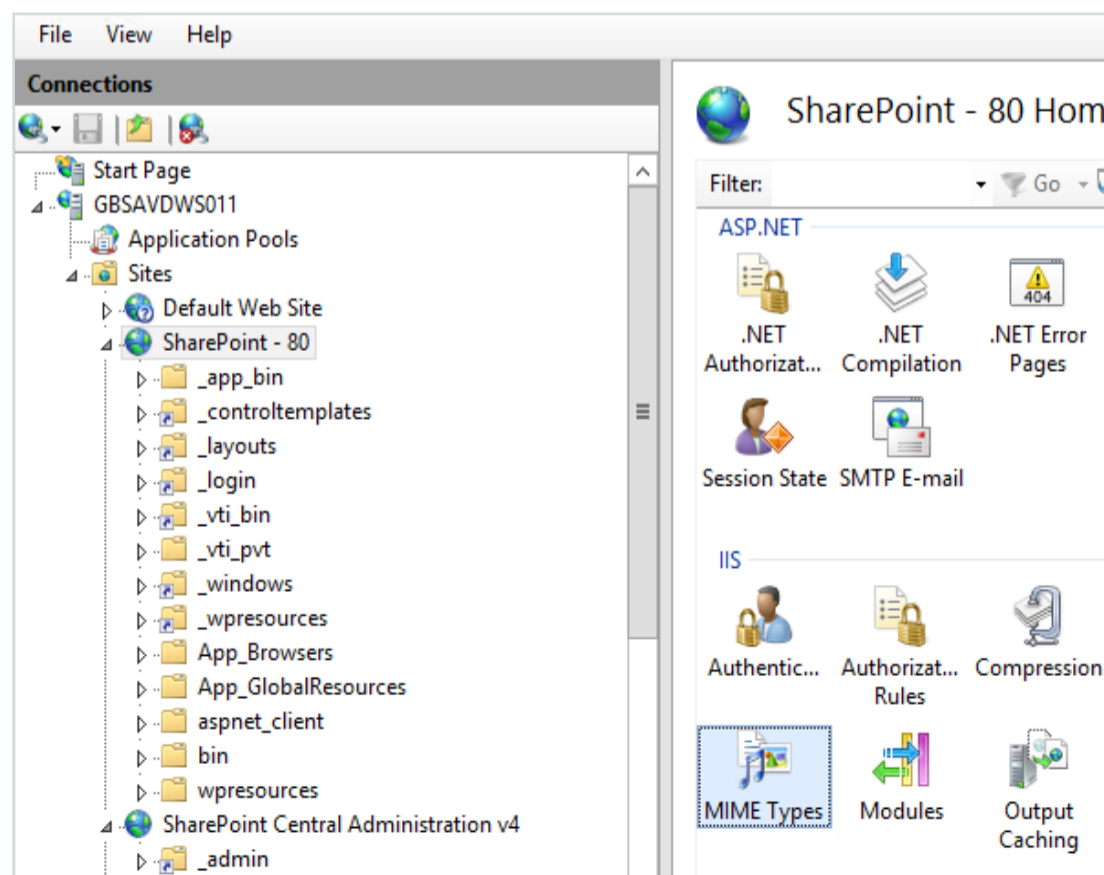
If it isn't present, it must be added manually.

01

Open IIS Manager and select the relevant SharePoint site.

02

In the Features View, double-click MIME Types.

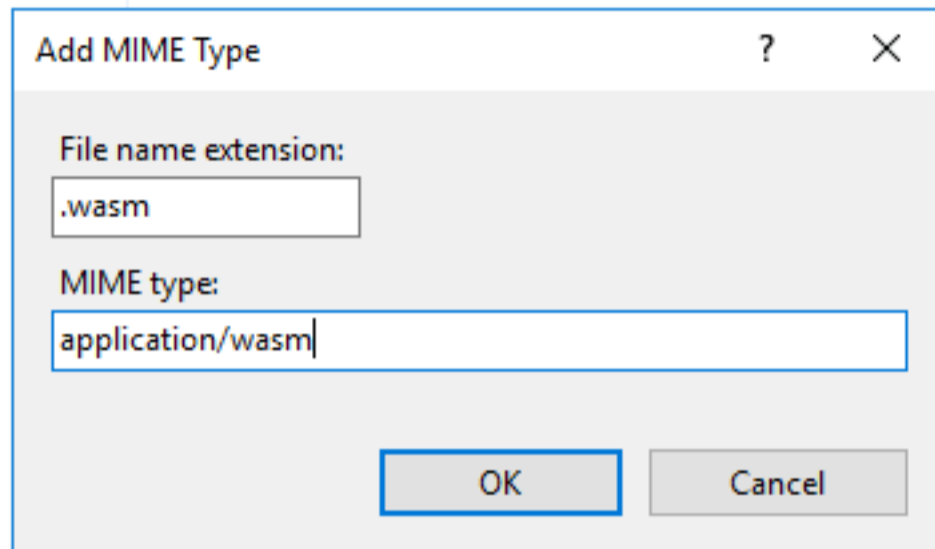


03

In the Actions pane, click Add.

04

In the Add MIME Type dialog box, type a file name extension (**.wasm**) in the File name extension text box and **application/wasm** in the MIME type text box. Then click OK.



The screenshot shows a dialog box titled "Add MIME Type" with a question mark and a close button (X) in the top right corner. The dialog has two text input fields. The first field is labeled "File name extension:" and contains the text ".wasm". The second field is labeled "MIME type:" and contains the text "application/wasm". At the bottom of the dialog, there are two buttons: "OK" and "Cancel".

If you still encounter any problems, please send the configuration file of the relevant web application, along with screenshots and error messages, to our friendly support team at support@muhimbi.com.

Appendix — Licensing

Licensing information can be found [here](#).

Want more help?



Support

Support requests are handled directly by the engineers who built the product.

[Submit support ticket](#)



Sales

Please contact our sales team with questions related to licensing and sales.

[Contact sales](#)



Knowledge base

We detail the changes and improvements to each version inside our knowledge base.

[Visit knowledge base](#)

A quick overview of our UI

Full-Screen View

Thumbnails
Outline
Annotations
Bookmarks

Jump to Page

Pan

Zoom

Fit / Fill

Annotations

Document Editor / Crop

Export

Close Document

Content Editor

Print

Search

Save Changes

Save changes

Home

Documents

Site Contents

EDIT LINKS

Page < 1 > of 5

100%

5 pt

Normal

Settings for the currently selected annotation

Revenue Breakdown by Industry Fiscal Year 2021

INDUSTRY	REVENUE IN 2021 (IN \$ MM)	REVENUE 2021 (%)
Software	181.0	25.47%
Transportation	151.9	21.37%
Healthcare	112.4	15.82%
Financial Services	72.0	10.13%
Construction	53.8	7.57%
Electronics	40.1	5.64%
Chemical Industry	32.7	4.60%
Pharmaceutical Industry	28.2	3.97%
Toys	17.0	2.39%
Fashion Industry	11.1	1.56%
Education	5.8	0.82%
Household Goods	3.2	0.45%
Fast Consumer Goods	1.5	0.21%
Total Revenue	710.7	100%

Software Industry Revenue
In \$ MM, in 2021

Revenue Trend
Year Over Year Comparison

Note

Delete Annotation



muhimbi

PDF Editor
for SharePoint On-
Premises

v1.4

Muhimbi Ltd. — A PSPDFKit Company

Midshires House,

Midshires Business Park,

Smeaton Close, Aylesbury BUCKS

HP19 8HL, United Kingdom